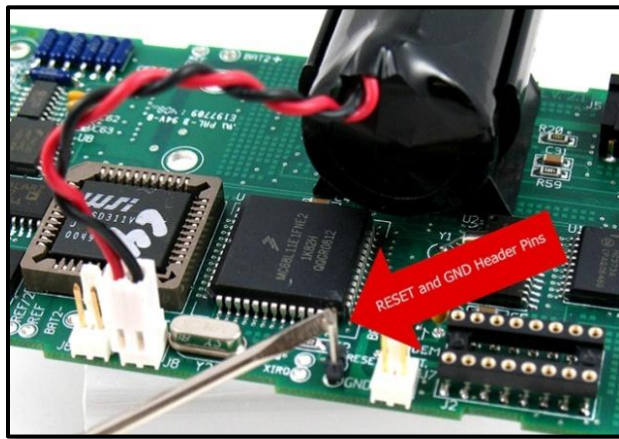


C-Cell 3.6V Li BATTERY REPLACEMENT PROCEDURES

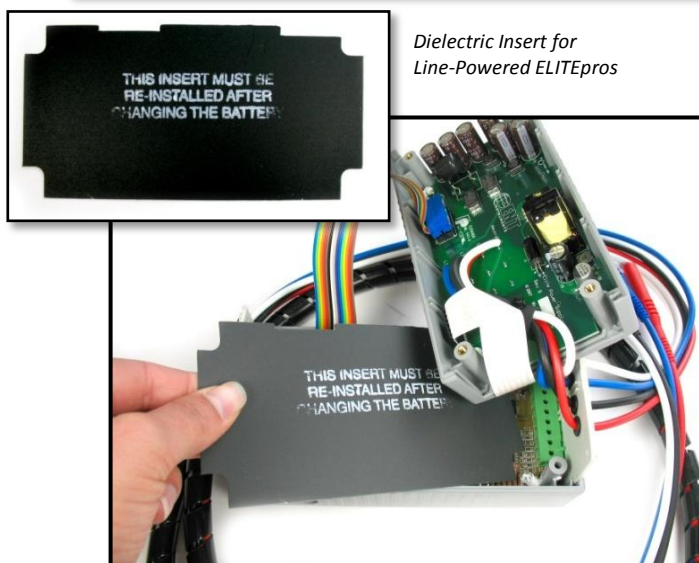
For DENT PRO-SERIES Instruments



DATApro RESET and GND Pins



Dielectric Insert for
Line-Powered ELITEpros



1. Remove voltage leads from any source!
2. Remove the four case screws from the bottom panel.
3. Slide the top panel off the end panels and lay to the side.
4. **Do not remove original battery if the unit has valuable data stored!** Locate the battery and cut the retaining tape. If you are replacing a low voltage battery: Connect the new battery to the redundant battery post (MAIN BATT) then quickly remove the old battery from its battery post
5. If you are replacing a "dead" battery: Remove the old battery from the holder and insert the new one, but do not connect to the terminal.
6. Short the MAIN BATT pins together to remove charge
7. Connect the new battery to the MAIN BATT post
8. Short RESET and GND pins for one second
9. **NOTE:** If replacing batteries for an instrument with a modem, connect modem battery first then connect the main battery.
10. Tape the new battery into the battery holder (Apply Dielectric Insert on Line Powered Units. The included Dielectric Insert shield is only required for Line Powered ELITEpro units.)
11. Close the case and re-install the four case screws.
12. Connect with ELOG software and set unit's time.
13. Check the battery voltage in Present Readings/Show as Text screen. Battery should read between 3.5-3.7VDC.
14. Set the logger's clock using ELOG software.